



# Doors & windows

Non-insulated profile systems  
made from steel and stainless steel

**JANSEN**

# Strong views. Not insulated, but fully functional.

Doors and windows symbolise openness and provide a way in for people, light and air. But they also protect from external influences. The individual requirements for thermal insulation and sound reduction or burglar and bullet resistance determine how doors and windows are to be constructed.

The non-insulated profile systems from Jansen for windows and doors in steel or stainless steel are suitable for use in parts of a building in which there are thermal insulation requirements to fulfil and therefore no insulating properties are required.

The door and window systems of the Jansen Economy series are suitable for dry and wet glazing and are economical and flexible in use. With their minimal basic depths, the complete systems can even be flush-fitted in narrow constructions and still guarantee maximum stability. The door systems are also available with easy-access thresholds.

The range includes the following profile series:

- Jansen-Economy 50 doors (steel and stainless steel): with a basic depth of 50 mm, suitable for flush-fitted single and double-leaf doors and fixed glazing.
- Jansen-Economy 60 doors (steel): with a basic depth of 60 mm, suitable for large, flush-fitted single and double-leaf door constructions and fixed glazing.
- Jansen Economy 50 windows (steel and stainless steel): with a basic depth of 50 mm, suitable for side-hung, turn/tilt, double and bottom-hung vents.

The Jansen Economy systems have successfully passed the tests laid down in the product standard EN 14351-1.

**On this basis, manufacturers can label windows and external doors with the CE mark which is obligatory throughout the EU.**



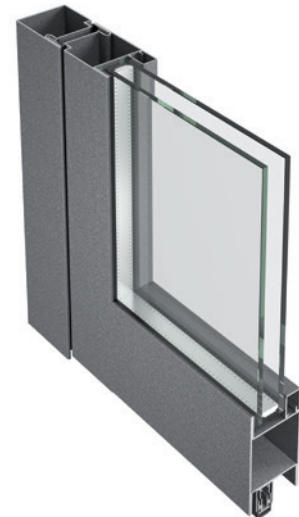
# Jansen-Economy Doors and windows



## Elegant solutions for every requirement

This profile series is characterised by its simple profile geometry, slender structures and maximum stability. This means streamlined production and economical installation. Single and double-leaf doors, with moving and/or fixed glazing toplights and side lights: constructions with Jansen-Economy 50 and 60 offer potential for creative solutions to

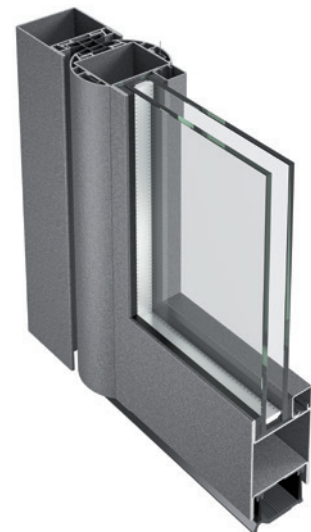
meet any building requirements. The Jansen-Economy 50 and Jansen-Economy 60 door constructions have an impressive flush-fitted design, continuous shadow gaps inside and outside, and a double rebate gasket. An automatic seal or rebate gasket can be fitted around the threshold if required.



## Jansen-Economy 60 anti-finger-trap doors: Safety and design perfectly combined

The rounded half profiles minimise the risk of injury at the secondary closing edge. This then prevents crushing and shearing points as per DIN 18650. With maintenance-free, high-performance hinge bushes, Jansen-Economy 60 anti-finger-trap doors are particularly suitable for buildings with high frequency use by the public, e.g.

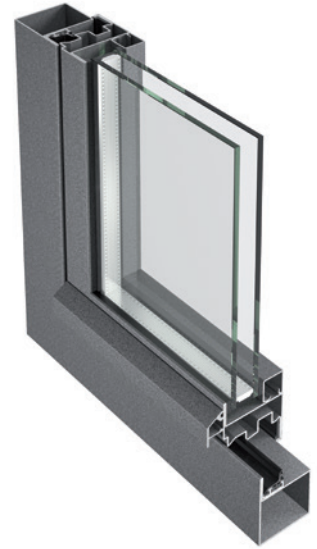
shopping centres, schools or hospitals. Jansen-Economy anti-finger-trap doors meet the product standard EN 14351-1 for external doors and are CE certified. The anti-finger-trap doors are compatible with the Janisol profile range. Integrated door closers and automatic side-hung door drives can also be installed.



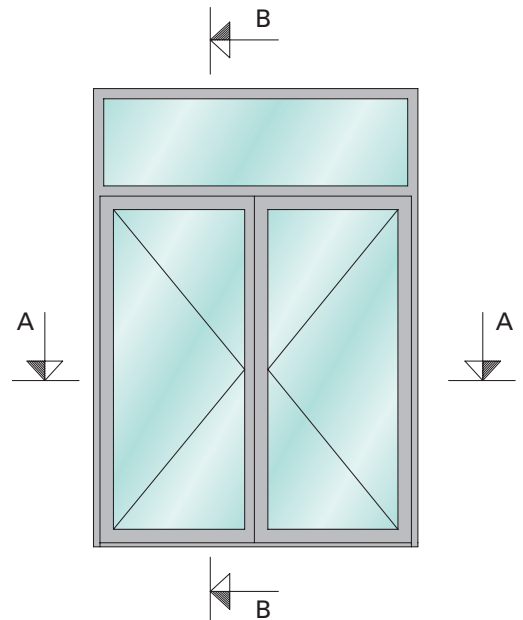
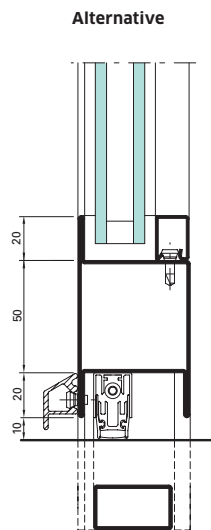
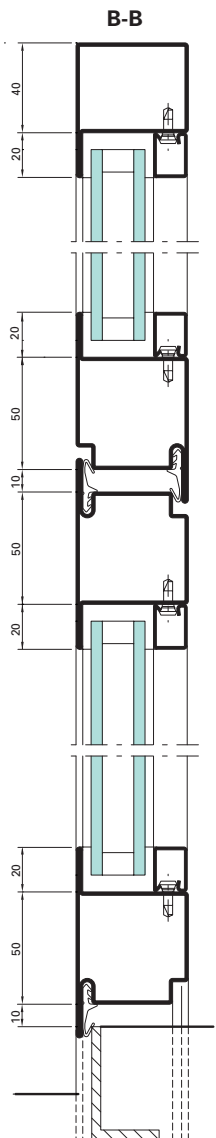
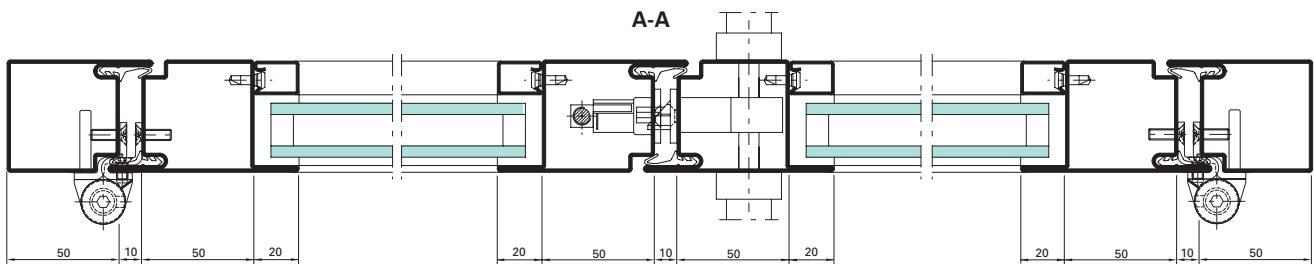
## Jansen-Economy windows – en vogue with a slimline look

With a basic depth of just 50 mm (or 58.5 mm) for the vent profile, Jansen-Economy 50 is also suitable for window vents: side-hung, turn/tilt, double or bottom-hung vents. Fully-tested, system-specific fittings are available for all opening types,

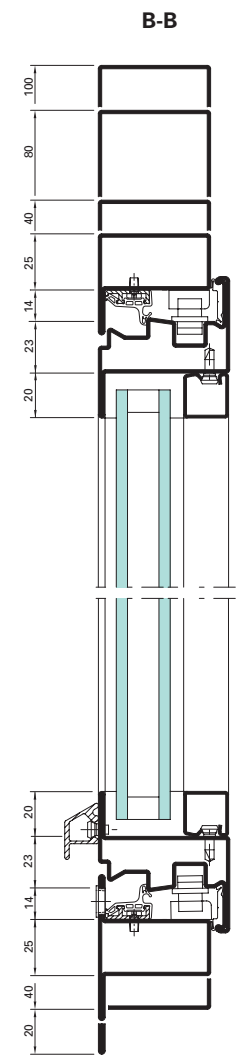
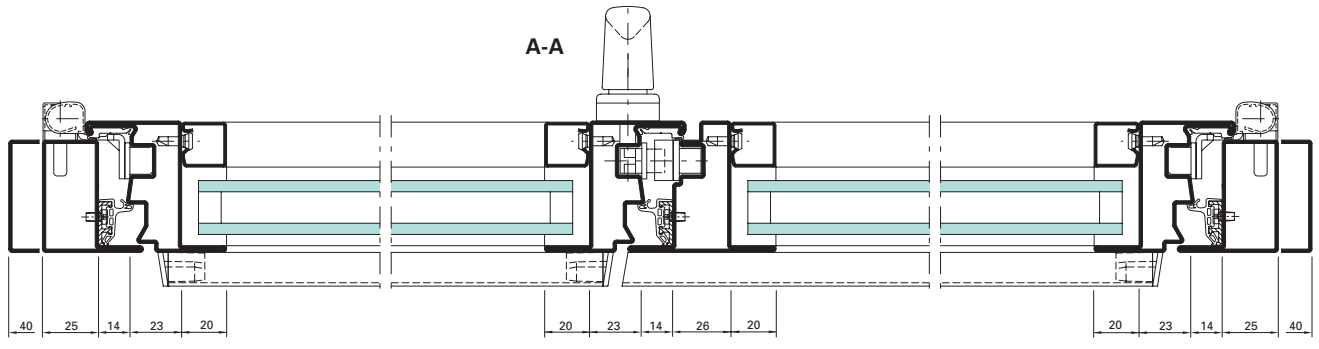
complemented by attractive window handles in aluminium or stainless steel. Jansen-Economy 50 window constructions have a centre gasket in the area around the window rebate plus a rebate gasket on the room side.



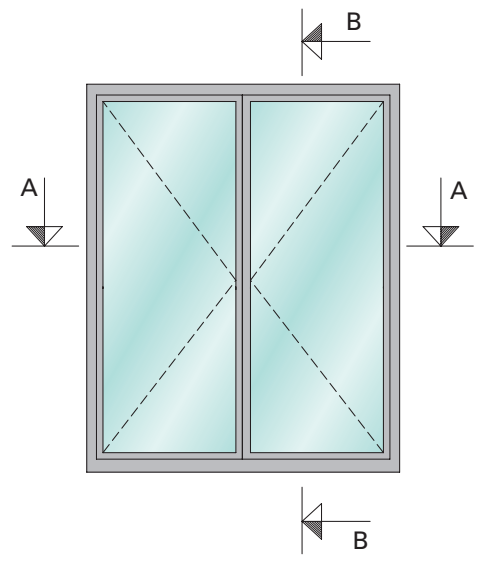
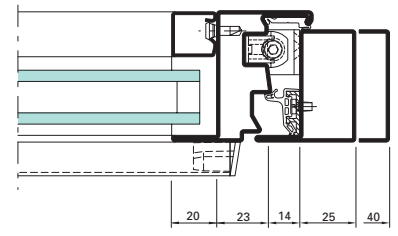
Example of Jansen-Economy 50 doors



Example of Jansen-Economy 50 windows



Verdeckt liegender Fensterbeschlag





Chanel Boutique «Crystal Houses», Amsterdam/NL  
Jansen-Economy 50 satinless steel



# Jansen-Economy 50 Stainless steel



## The perfect choice for every requirement

Jansen Economy 50 stainless steel profiles are available in 1.4404 (AISI 316L) quality. This material is specially tailored to architectural and functional applications in normal and corrosive atmospheres. Its application-specific use allows for a considerable optimisation of the material costs. The profile shapes and construction depths are identical

to those of the Jansen Economy steel profiles. This ensures that planners can combine the profile series and manufacturers can use identical accessory parts without any problems at all.

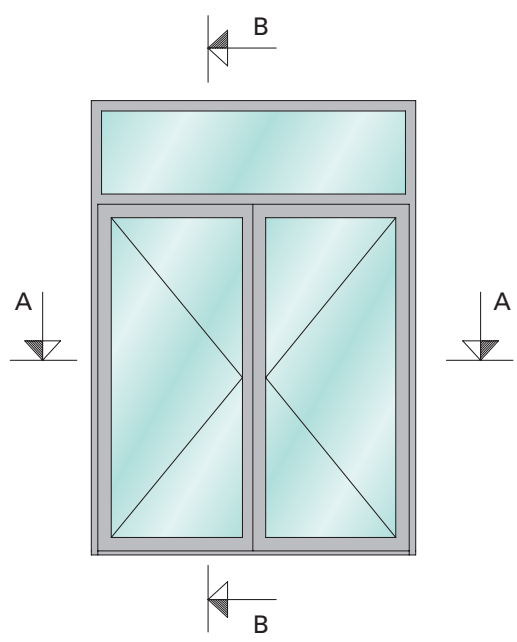
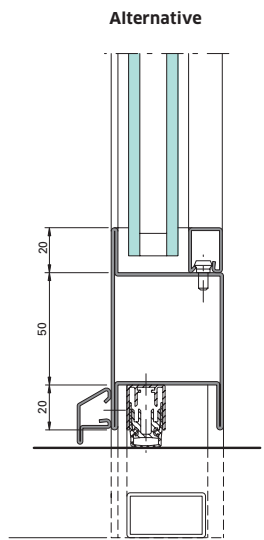
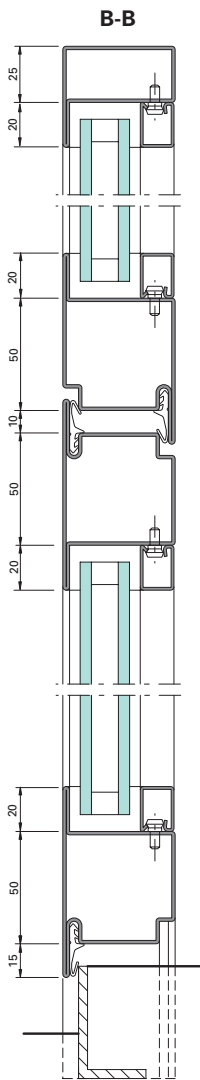
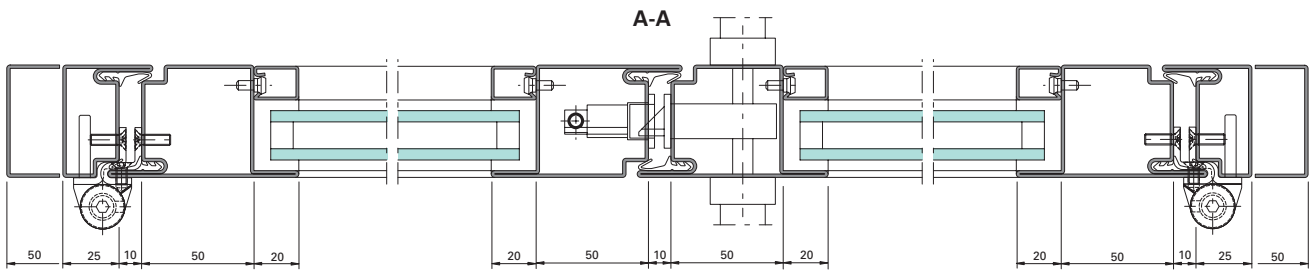
An interesting range of stainless steel fittings has been added to the comprehensive lineup for windows and doors.

**The 1.4404 (AISI 316L) material is durable in both normal, non-corrosive atmospheres as well as in chlorine-rich and saline atmospheres. It can therefore be used universally, e.g.:**

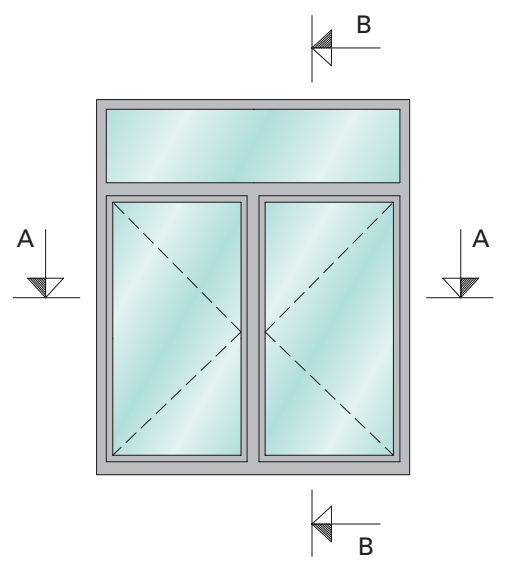
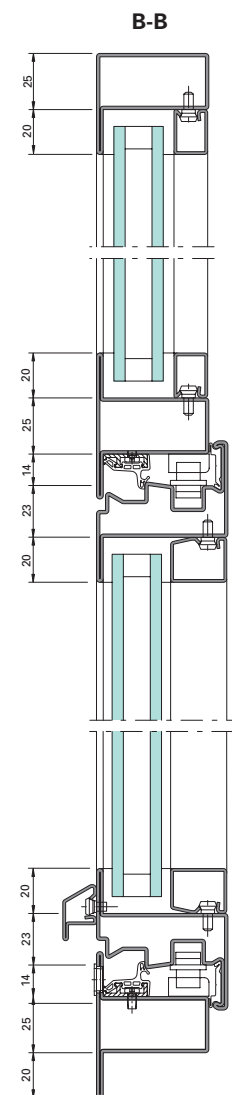
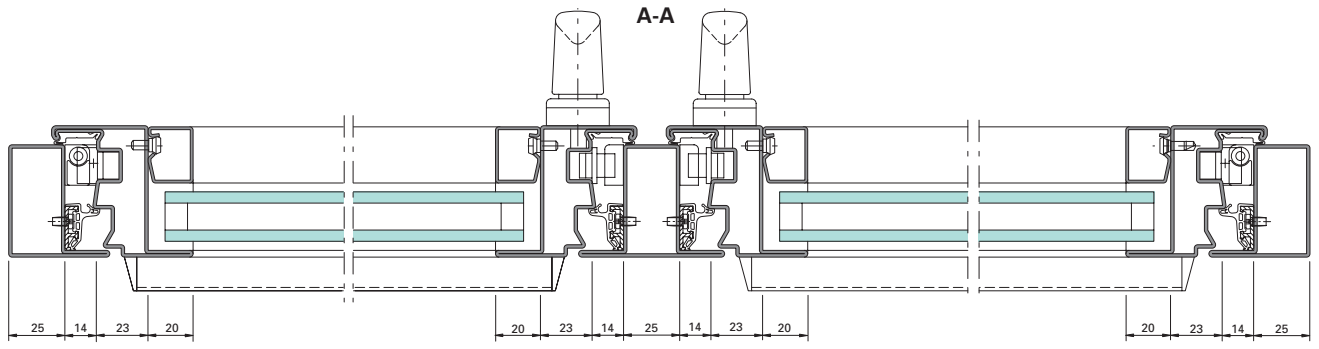
- in rural environments
- in residential and commercial areas
- in indoor areas
- in industrial areas
- in coastal areas
- in hygiene areas
- close to roads (saline load)



Example of Jansen-Economy 50 stainless steel doors

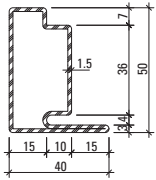


Example of Jansen-Economy 50 stainless steel windows

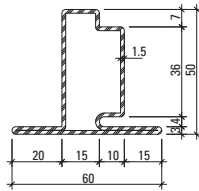


# Profile range

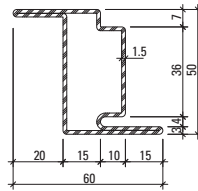
## Jansen-Economy 50



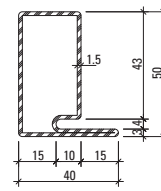
30.006  
30.006 Z  
30.006.01



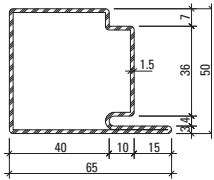
30.106  
30.106 Z  
30.106.01



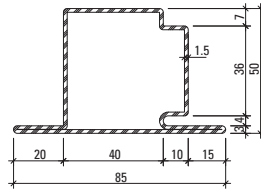
30.406  
30.406 Z  
30.406.01



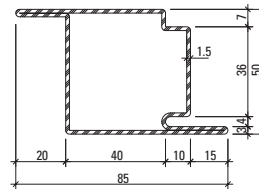
30.021



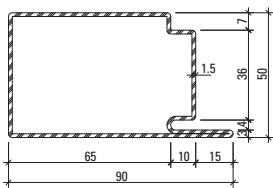
30.007  
30.007 Z  
30.007.01



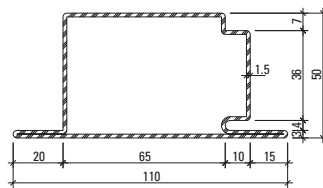
30.107  
30.107 Z  
30.107.01



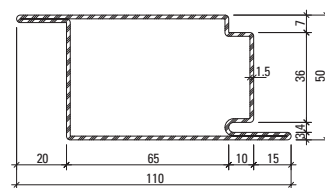
30.407  
30.407 Z  
30.407.01



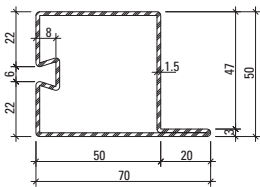
30.008  
30.008 Z



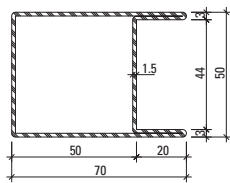
30.108  
30.108 Z



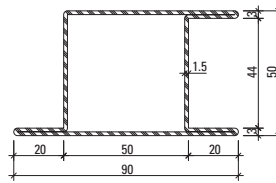
30.408  
30.408 Z



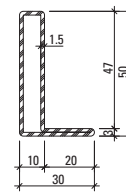
32.388  
32.388 Z



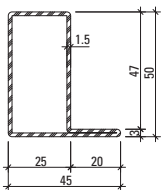
04.568  
04.568 Z



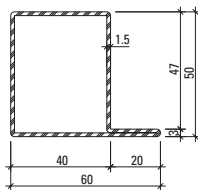
05.568  
05.568 Z  
05.568.01



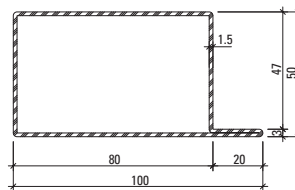
01.531  
01.531 Z



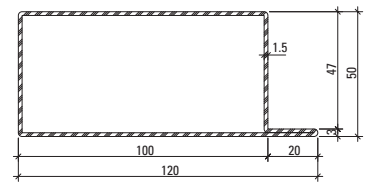
01.534  
01.534 Z  
01.534.01



01.564  
01.564 Z  
01.564.01



01.592  
01.592 Z



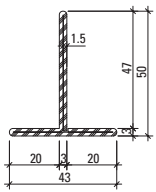
01.596  
01.596 Z

Z = strip galvanised steel

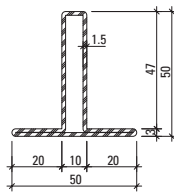
01 = Stainless steel, bright,  
Material 1.4404 (AISI 316L)

The stainless steel profiles are also available with a finished design. The visible surfaces can be ordered with a grain finish 220-240.

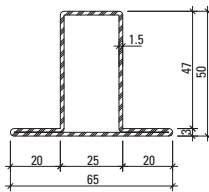
# Profile range Jansen-Economy 50



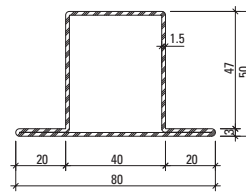
400.023  
400.023 Z



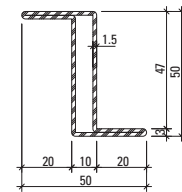
02.531  
02.531 Z



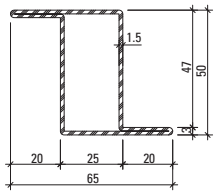
02.534  
02.534 Z  
02.534.01



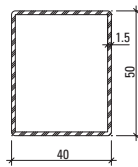
02.564  
02.564 Z  
02.564.01



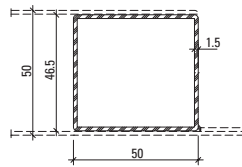
03.531  
03.531 Z



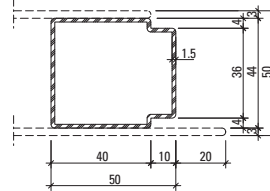
03.534  
03.534 Z  
03.534.01



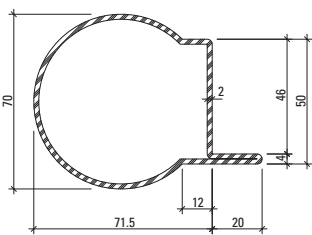
400.048  
400.048 Z



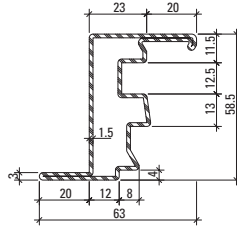
400.049  
400.049 Z



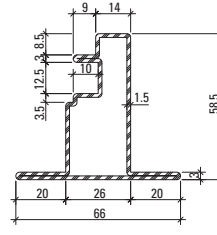
81.009 Z



60.153  
60.153 Z



30.900  
30.900 Z  
30.900.01



30.901

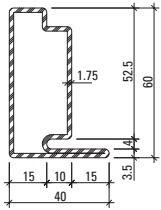
Z = strip galvanised steel

01 = Stainless steel, bright,  
Material 1.4404 (AISI 316L)

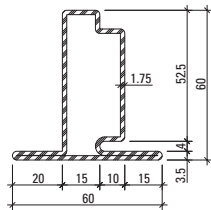
The stainless steel profiles are also available with a linished design. The visible surfaces can be ordered with a grain finish 220-240.



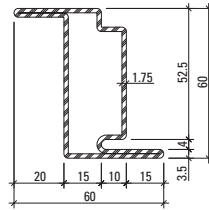
# Profile range Jansen-Economy 60



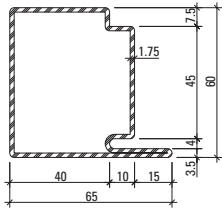
30.018  
30.018 Z



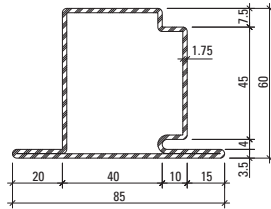
30.118  
30.118 Z



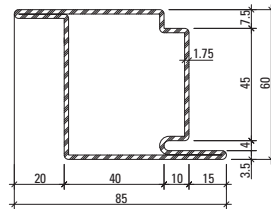
30.418  
30.418 Z



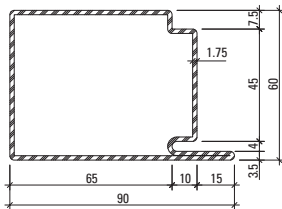
30.019  
30.019 Z



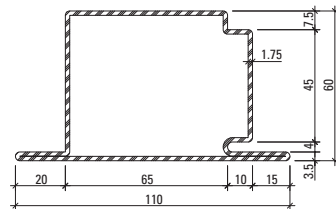
30.119  
30.119 Z



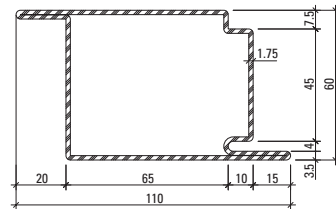
30.419  
30.419 Z



30.017  
30.017 Z

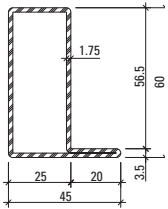


30.117  
30.117 Z

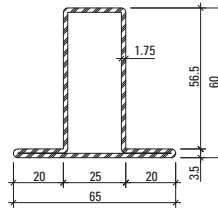


30.415  
30.415 Z

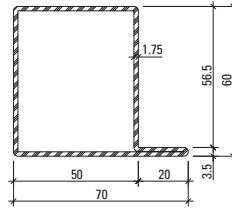




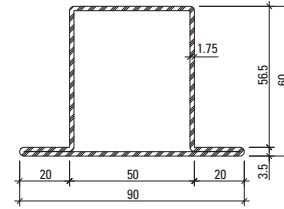
01.634  
01.634 Z



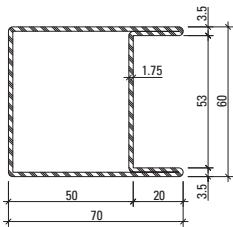
02.634  
02.634 Z



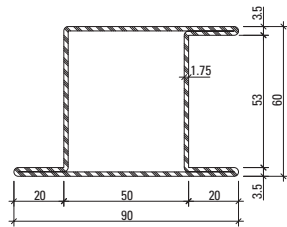
01.684  
01.684 Z



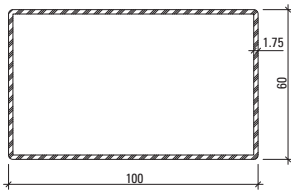
02.684  
02.684 Z



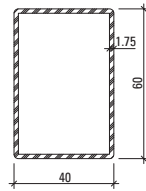
04.637  
04.637 Z



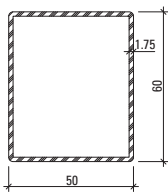
05.637  
05.637 Z



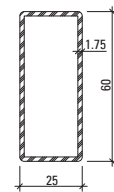
400.051  
400.051 Z



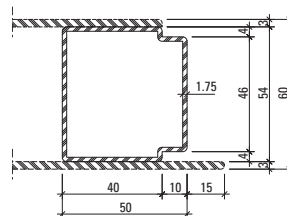
400.052  
400.052 Z



400.054  
400.054 Z



400.055  
400.055 Z



81.010 Z

Z = strip galvanised steel

# Jansen-Economy 60 Folding wall



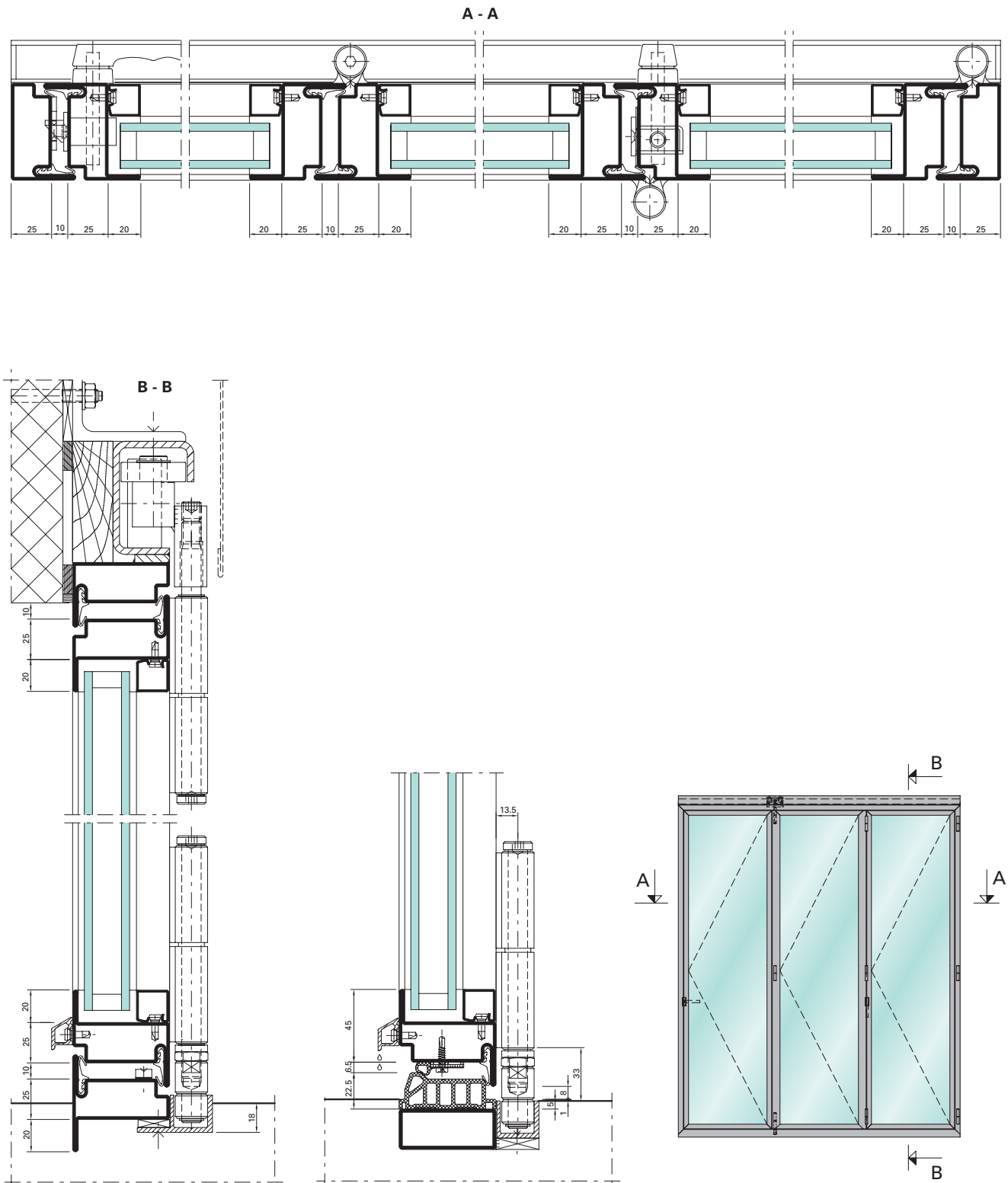
## Steel folding wall

This folding wall is based on the non-insulated Jansen-Economy 60 system. Flexible in use, the folding wall system can be used as a room divider as well as for outside areas, and can be inward or outward-opening. A compatible range of fittings and accessories ensures proper, smooth and quiet operation.

A range of designs is available for the threshold. Depending on the size and loading, profiles with a face width of 25 mm or 50 mm can be used. The load-bearing capacity of the top running gear is up to 200 kg, which in turn permits leaf weights of up to 100 kg.



Example of Jansen-Economy 60 folding wall



# Folding and sliding doors

## Manual and automatic



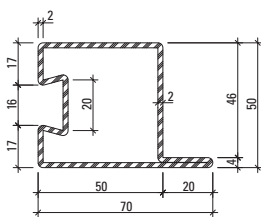
For folding and sliding doors, Jansen provides a coordinated range of profiles with basic depths of 50, 60 and 80 mm, as well as accessories and fittings to meet all requirements. The folding doors can be rebated behind, in or in front of the opening. They can be designed as inward or outward-opening doors, and with virtually any leaf division. Sliding doors come into their own when a space-saving design is required. Infill

panels or glass infills can be used to meet increased demands for high-quality products.

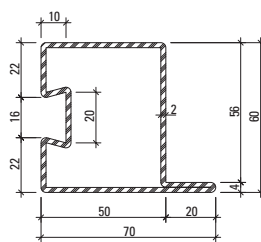
The range of profiles and gaskets is suitable for both manually and automatically operated door systems. The complementary fittings are also fully tested and guarantee a long service life with reliable, quiet and smooth operation.

Jansen folding doors have been tested in accordance with EN 13241-1 together with drives from Gilgen, a leading drive technology company. In this way, we provide our partners with the necessary prerequisites for CE marking, which is a legal requirement for both manual and automatic doors.

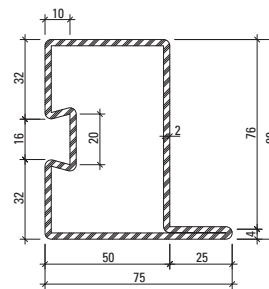
### Profile range



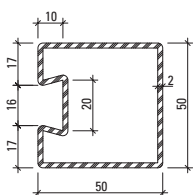
32.373



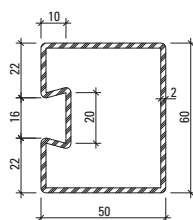
32.374



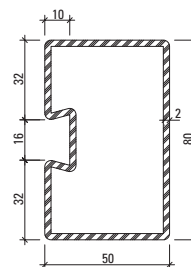
32.382



76.731

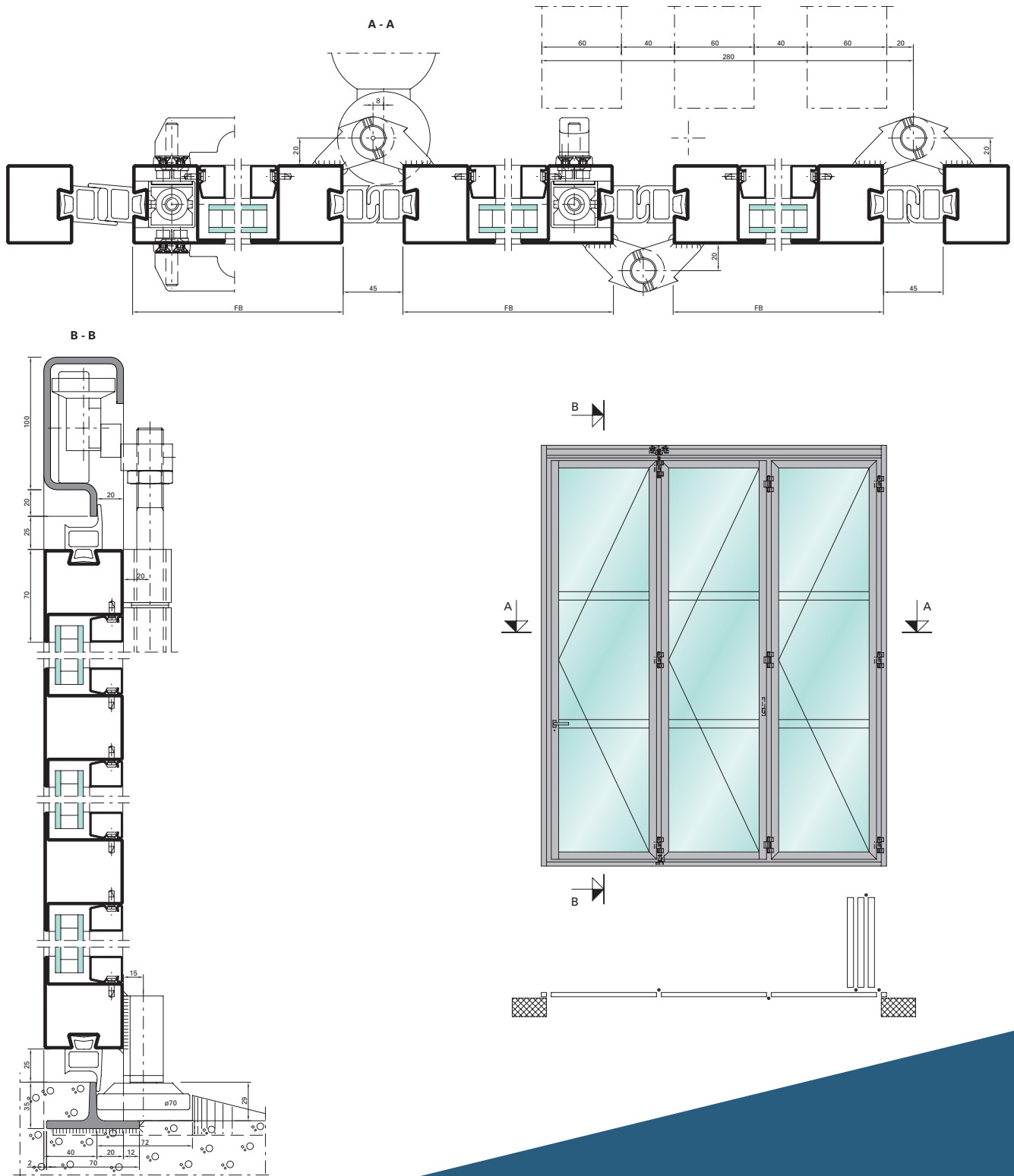


76.732



76.733

Example of folding doors



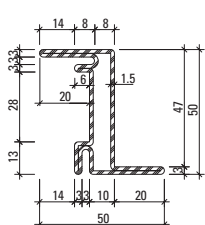
# Jansen Art'System Windows

## Slim steel profile system for uninsulated windows/window doors

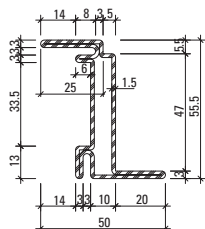
Jansen Art'System is a non-insulated profile system for windows and window doors. Originally developed as a market solution for France, the attractive profile has been expanded by Jansen into a system that is tested and approved in accordance with 14351-1. Jansen Art'System has been specially developed for the renovation of old buildings and is particularly suited to listed buildings which place high requirements on the external appearance of the building. Jansen Art'System enables the fabrication of inward-opening windows and window doors which are virtually identical to the existing units. However, Art'System can also play to its strengths in sustainably planned newbuilds as an innovative, space-saving profile system with extremely narrow face widths. The narrow profile face widths from Jansen Art'System meet the desire of today's architects to have large glass areas held in narrow frames.



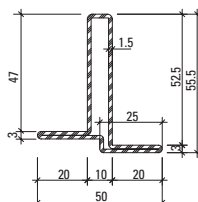
### Profile range



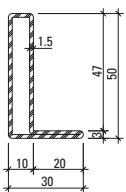
30.614 Z



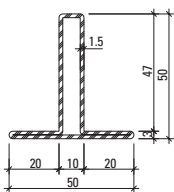
30.613 Z



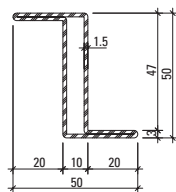
12.550 Z



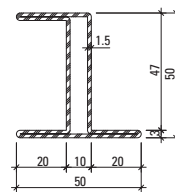
01.531  
01.531 Z



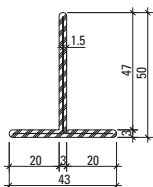
02.531  
02.531 Z



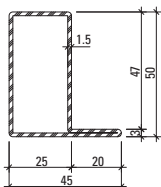
03.531  
03.531 Z



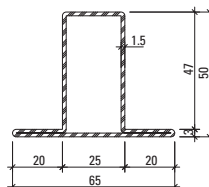
05.531 Z



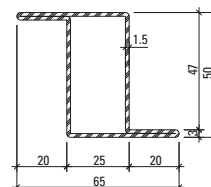
400.023  
400.023 Z



01.534  
01.534 Z



02.534  
02.534 Z

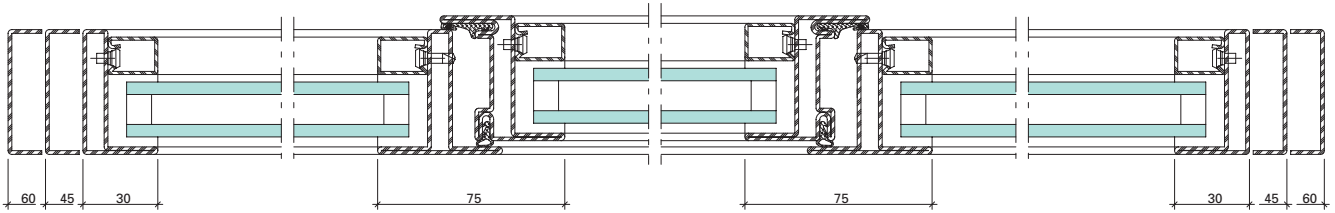


03.534  
03.534 Z

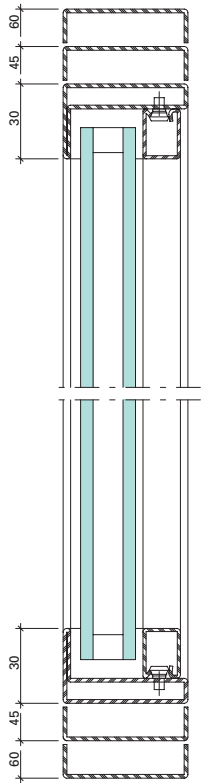
Z = strip galvanised steel

Example of Jansen Art'System

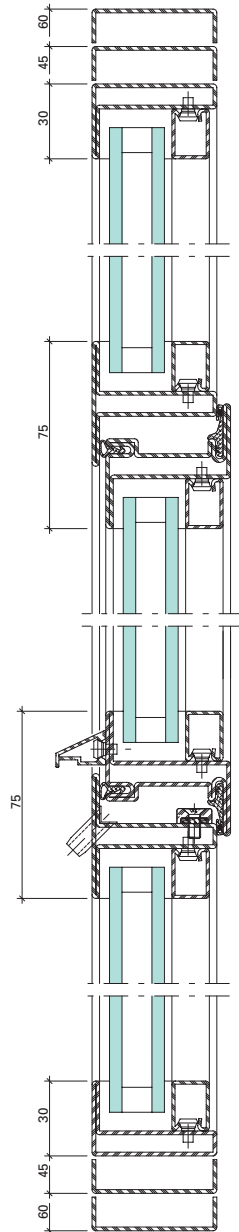
D - D



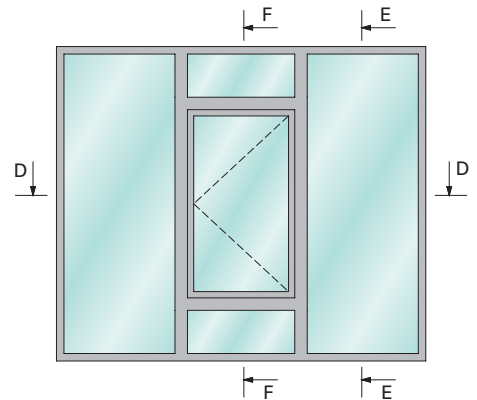
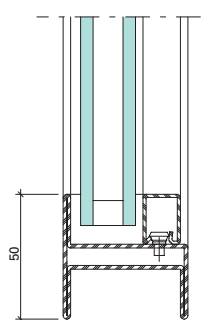
E - E



F - F

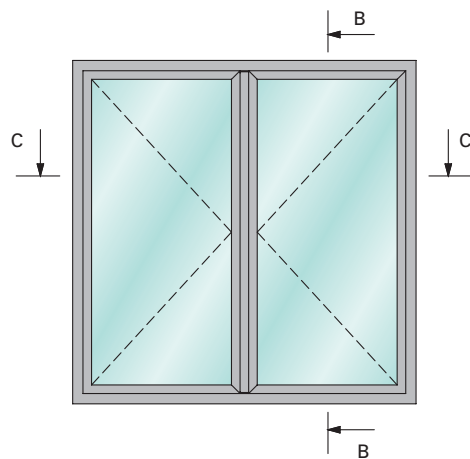
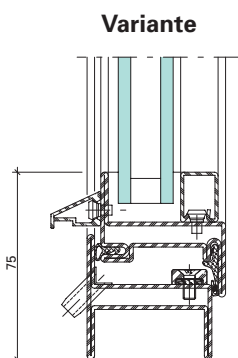
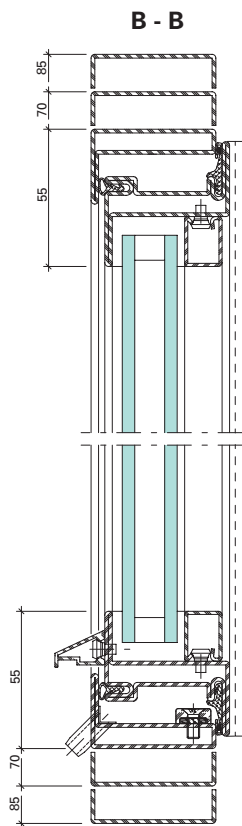
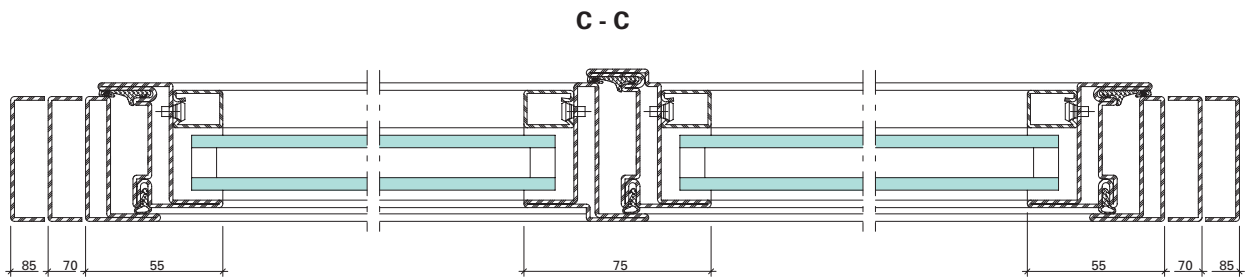


Variante





### Example of Jansen Art'System



# Jansen Art'15 Doors and partitions

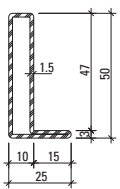
## Slim steel profile system for interior doors and partitions

The extremely reduced face width of Jansen Art'15, the new non-insulated steel profile system from Jansen, allows a unique design, while the steel material ensures a long service life. In this way, Jansen Art'15 not only meets the high design demands of ambitious architects, but also the high expectations of discerning clients in terms of design and function. Jansen Art'15 doors and

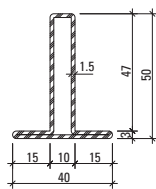
partitions separate the entrance hall from the living space, the kitchen from the dining area, or the home office from the living room, without compromising on the generous space. The extremely narrow, highly resilient steel profile system always ensures durable, highly stable constructions in an unparalleled slimline frame.



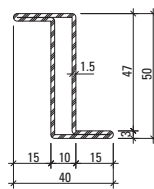
Profile range



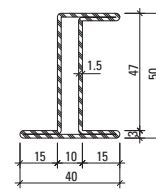
01.115



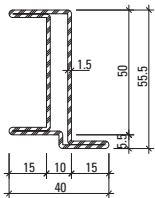
02.115



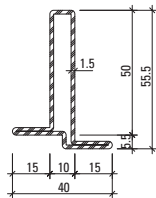
03.115



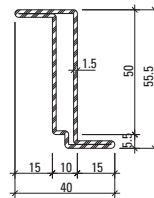
05.115



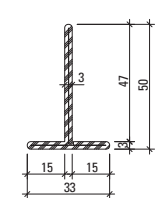
05.116



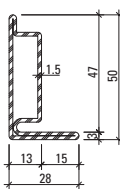
02.116



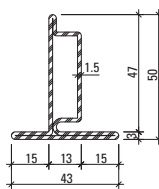
03.116



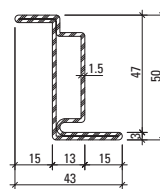
400.020



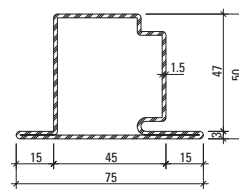
30.005



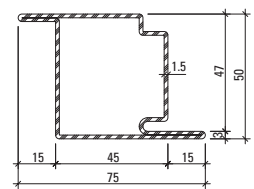
30.105



30.405



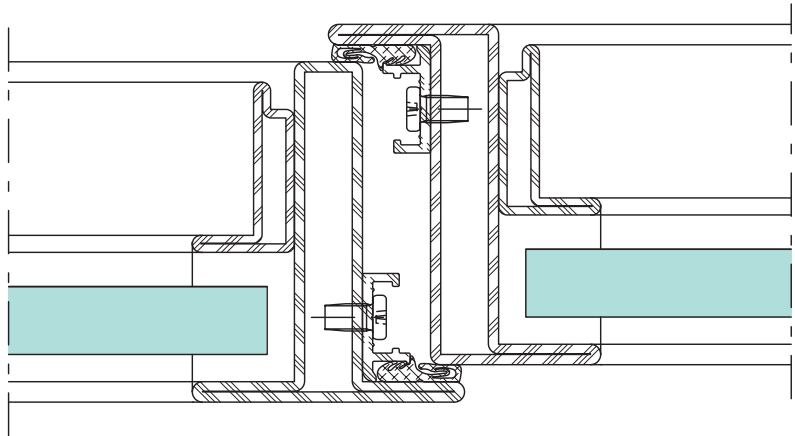
30.109



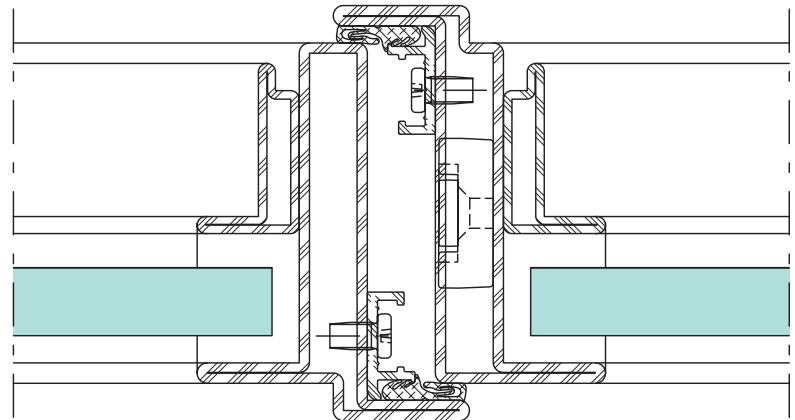
30.409

## Design range

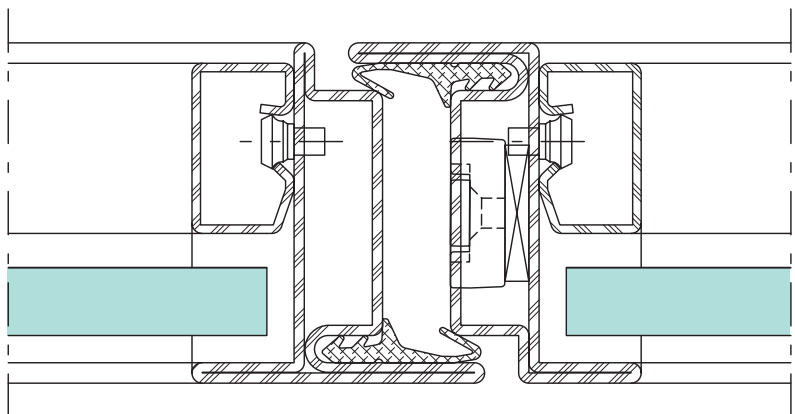
Face-fitted profile view



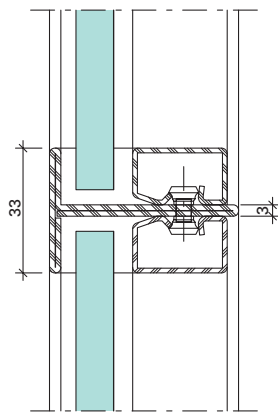
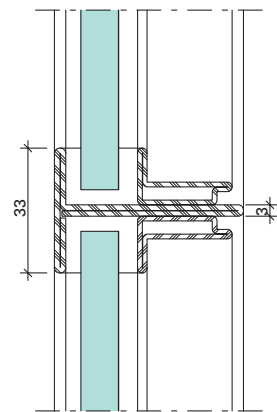
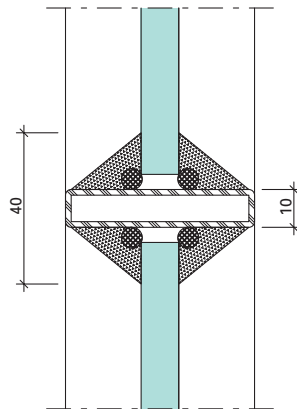
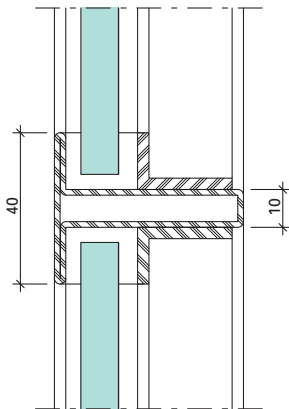
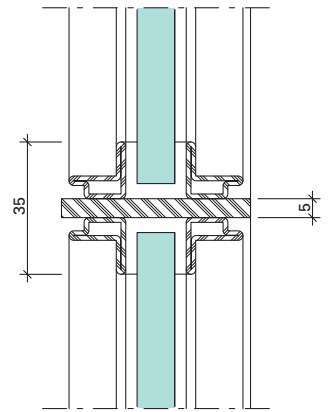
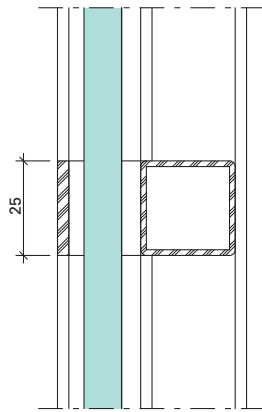
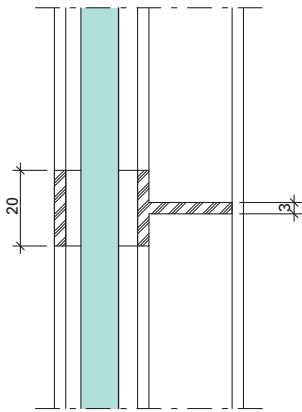
Rebated profile view



Flush-fitted profile view



Alternative glazings Jansen Art '15



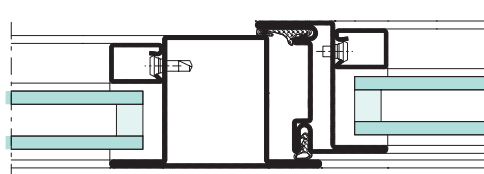


Werkhof, Heriau/CH  
Beat Consoni Architekten BSA SIA, St.Gallen  
Folding and sliding doors

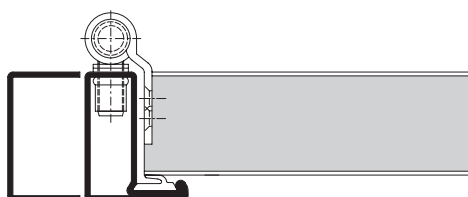
# Standard profiles

## Doors and windows

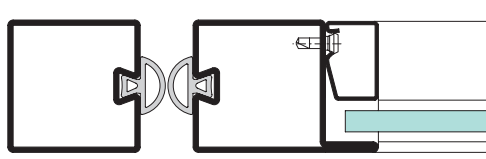
The comprehensive range of profiles with basic depths of 40, 50, 60 and 80 mm opens up design options for doors and windows. Functional and attractive single and double-vent designs are possible, with side sections and toplights, as curved doors or swing doors. With fixed glazing, the excellent structural properties of steel are clear to see. They allow slender frame dimensions and torsion-resistant units, even for large constructions.



Standard window profiles



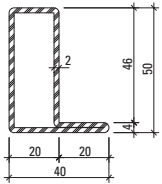
Frame doors



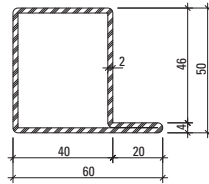
Swing doors

# Profile range

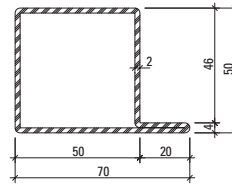
## Standard profiles 50 mm



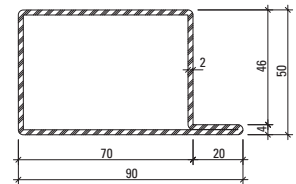
01.535



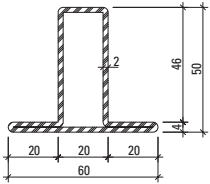
01.565



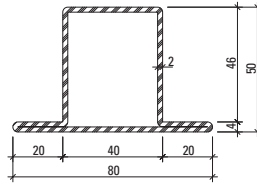
01.570



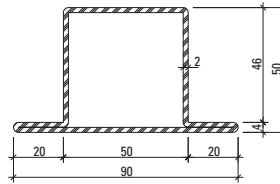
01.590



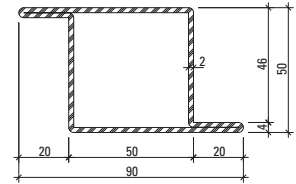
02.535



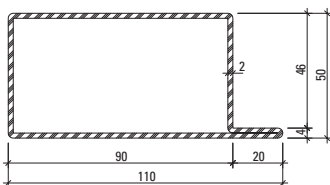
02.565



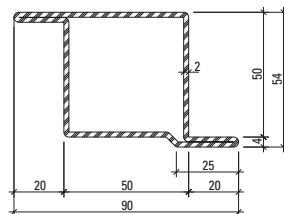
02.570



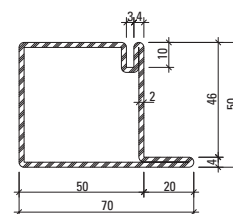
03.570



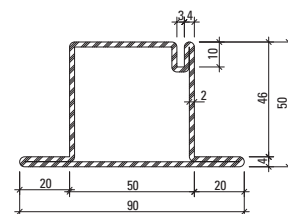
01.587



13.570

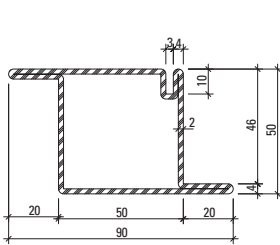


30.030

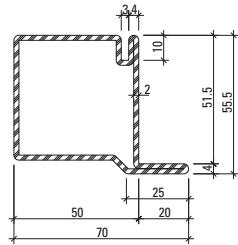


30.235

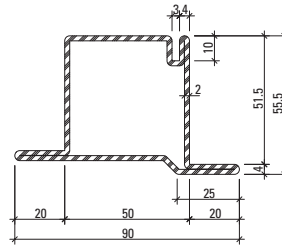




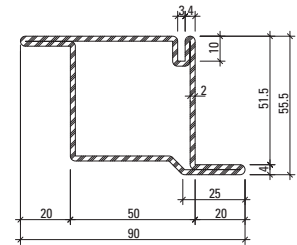
30.265



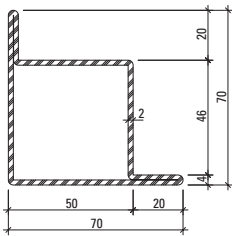
30.430



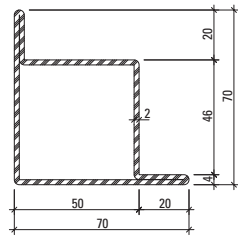
30.628



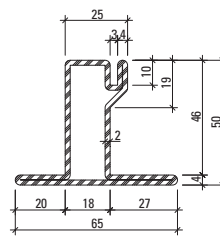
30.465



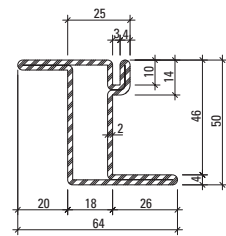
06.570



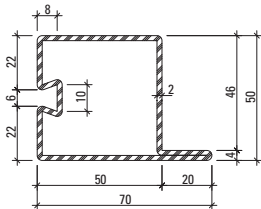
07.570



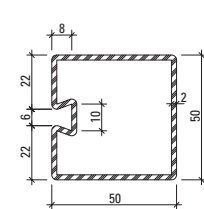
30.600



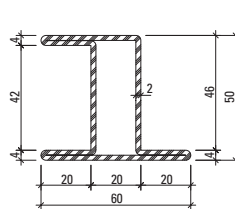
30.620



32.366

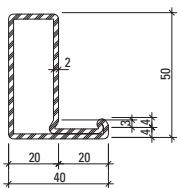


76.726

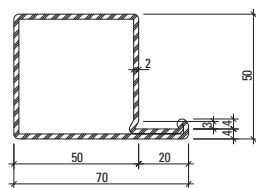


05.535

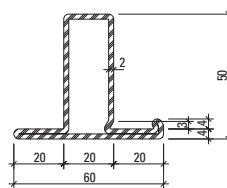
**Frame doors**



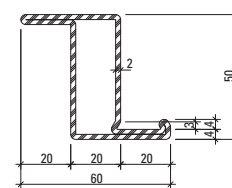
32.109



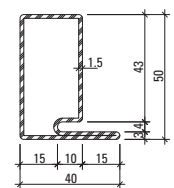
32.042



32.085

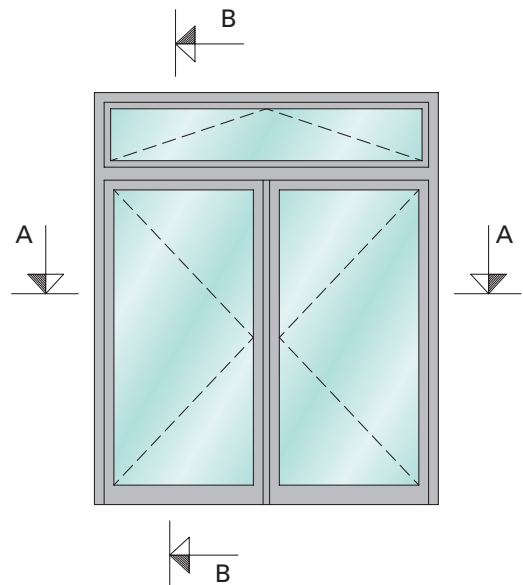
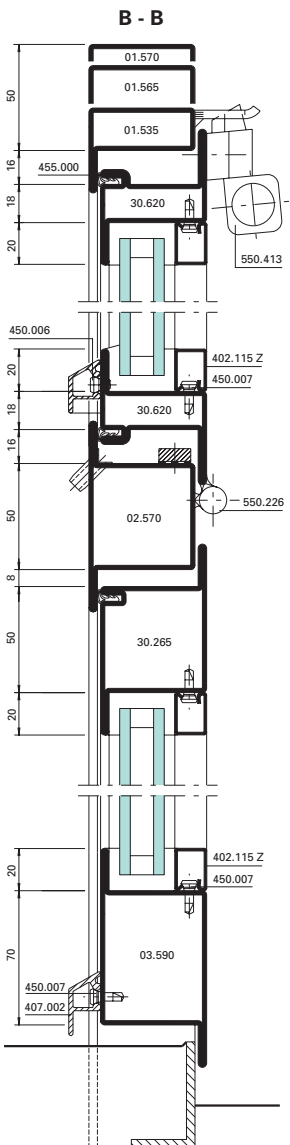
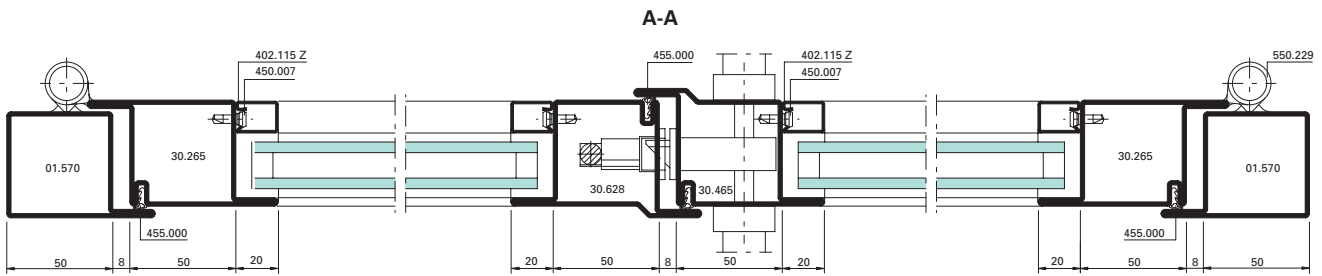


32.105



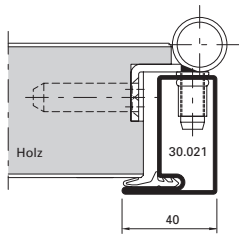
30.021

Example of doors and windows

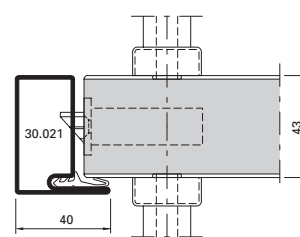
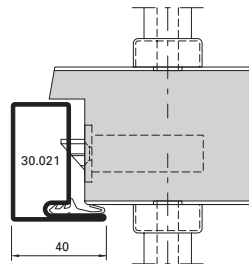


Example of frame doors

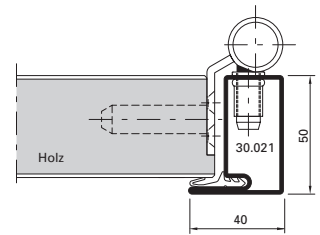
Alternative



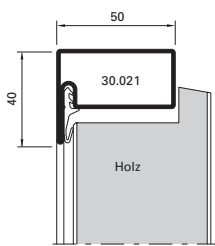
Alternative



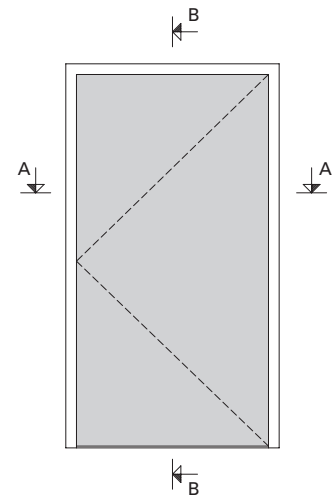
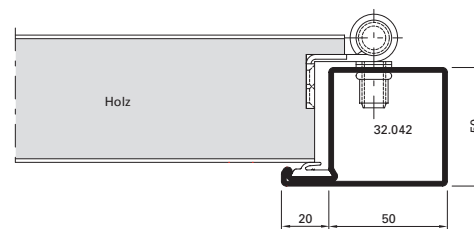
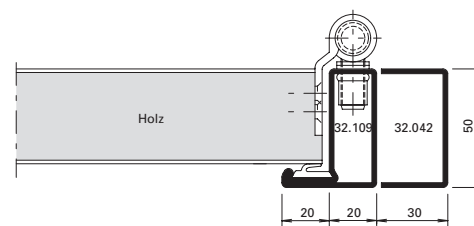
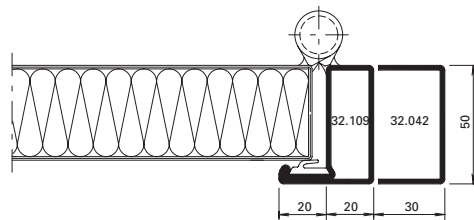
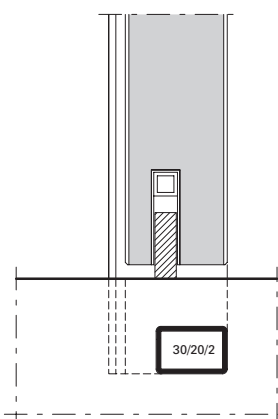
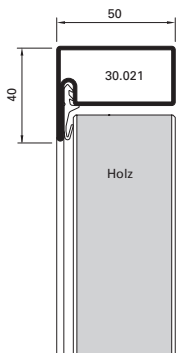
A - A



Alternative



B - B



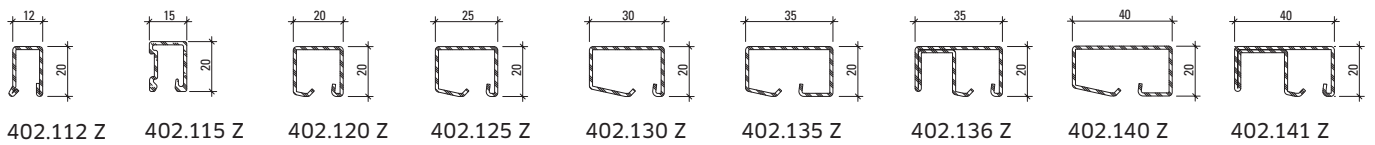




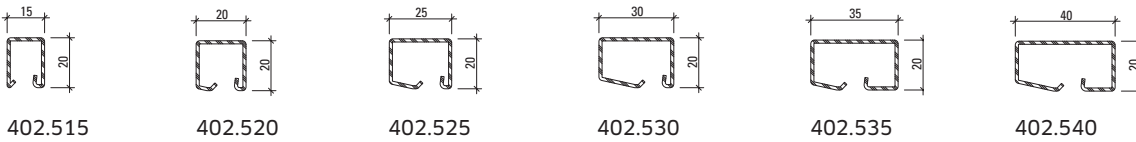
# Glazing beads

## Steel and aluminium

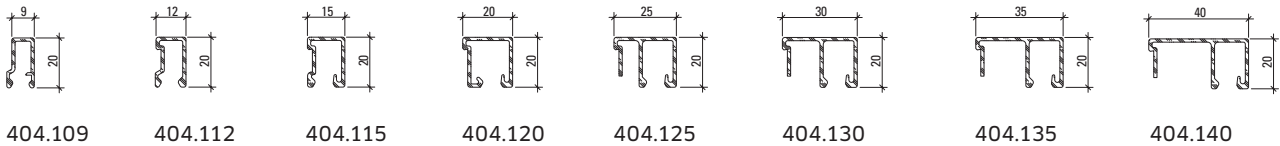
### Steel glazing beads made of strip galvanised steel (length 6 m)



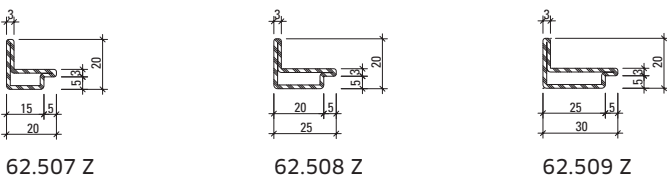
### Stainless steel glazing beads (length 6 m)



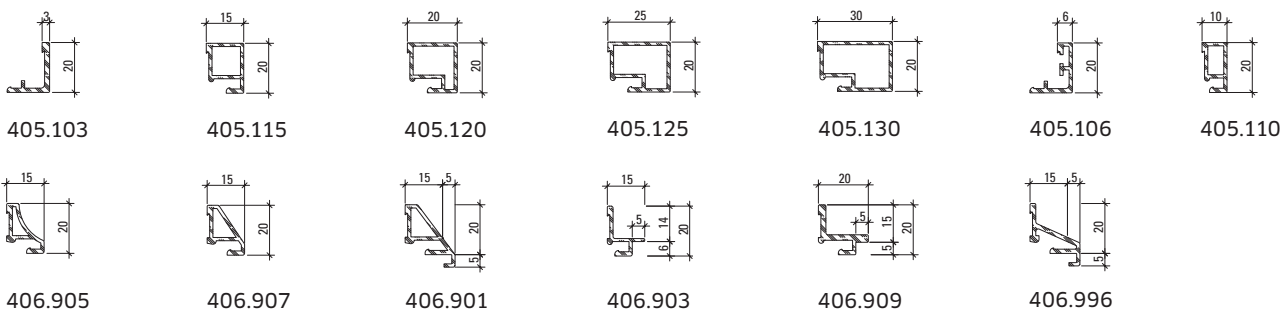
### Aluminium glazing beads (length 6 m)



### Angle contour steel glazing beads (length approx. 6 m)



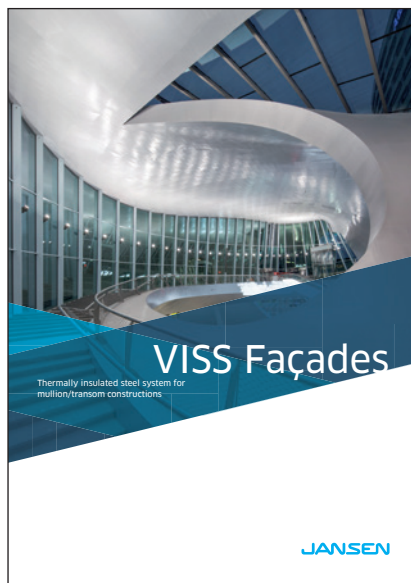
### Aluminium glazing beads (length 6 m)



# System versatility: for every application



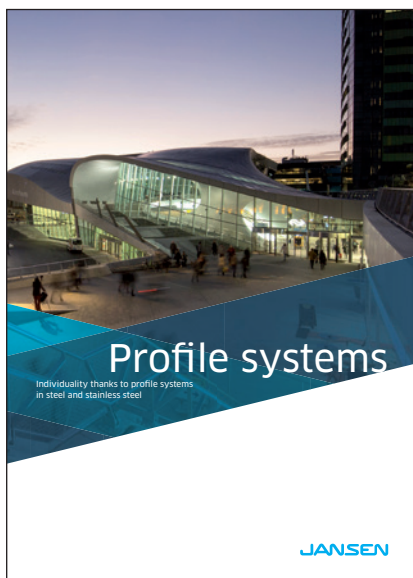
Smoke and fire doors and glazing



Thermally insulated steel system for mullion/transom constructions



Thermally insulated profile systems made from steel and stainless steel



Individuality thanks to profile systems in steel and stainless steel

You can find further brochures and documentation in our download centre at [jansen.com](http://jansen.com).

If there are any differences between this document and the current German version (item number K1016990), the latest version of the original German text in the Jansen Docu Center shall prevail.

K1016985 | Steel Systems | 05.2019 | Subject to change

Jansen AG

**Steel Systems**  
Industriestrasse 34  
9463 Oberriet  
Schweiz  
[jansen.com](http://jansen.com)

**JANSEN**